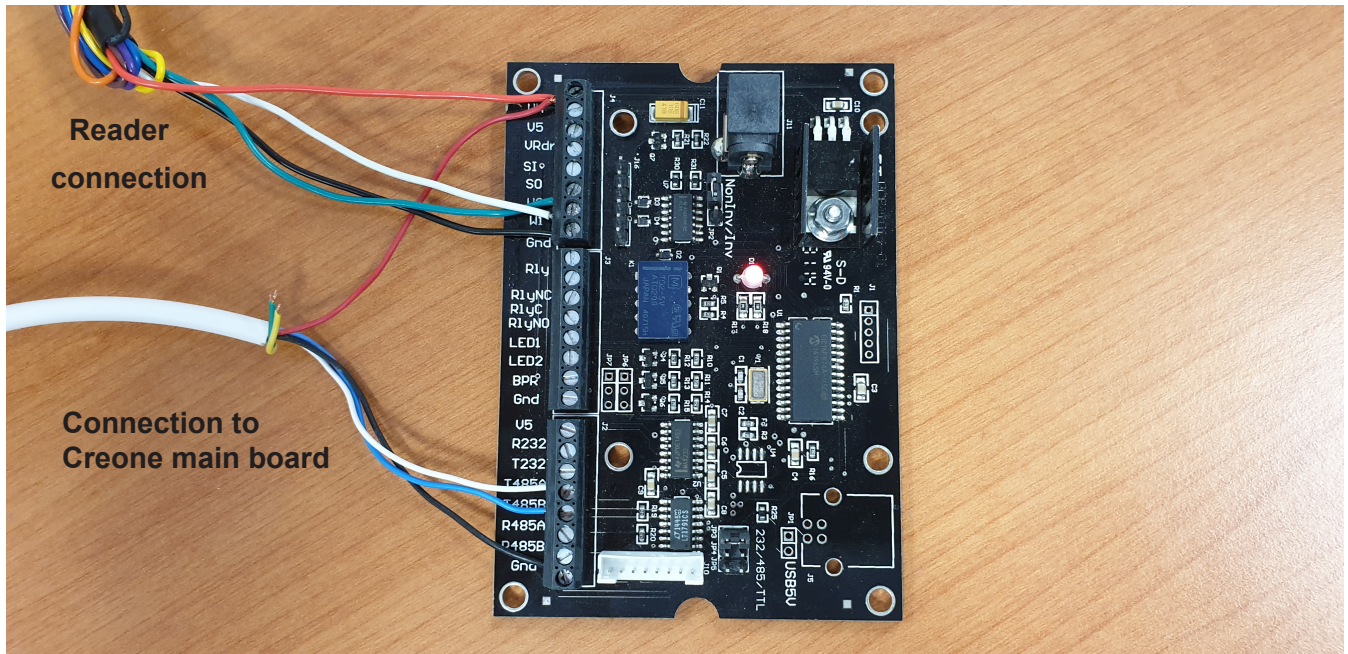


## Weigand to RS485 Converter Board

Below is the wiring standard for the Weigand -> RS485 converter board. The 4 wires from the reader shown in order from top to bottom (Red Voltage +, Green Weigand 0, White Weigand 1, Black Gnd)



The remaining wires in the picture above are for the RS485 signal attached to the Creone Keybox main control board shown in order from bottom to top of the terminal block: (Red Voltage +, Black Gnd, Blue 485B, White 485A)

